

# VTrans & Google Maps

COMMUNITY, DISASTER RESPONSE, ECONOMIC DEVELOPMENT, TRANSPORTATION

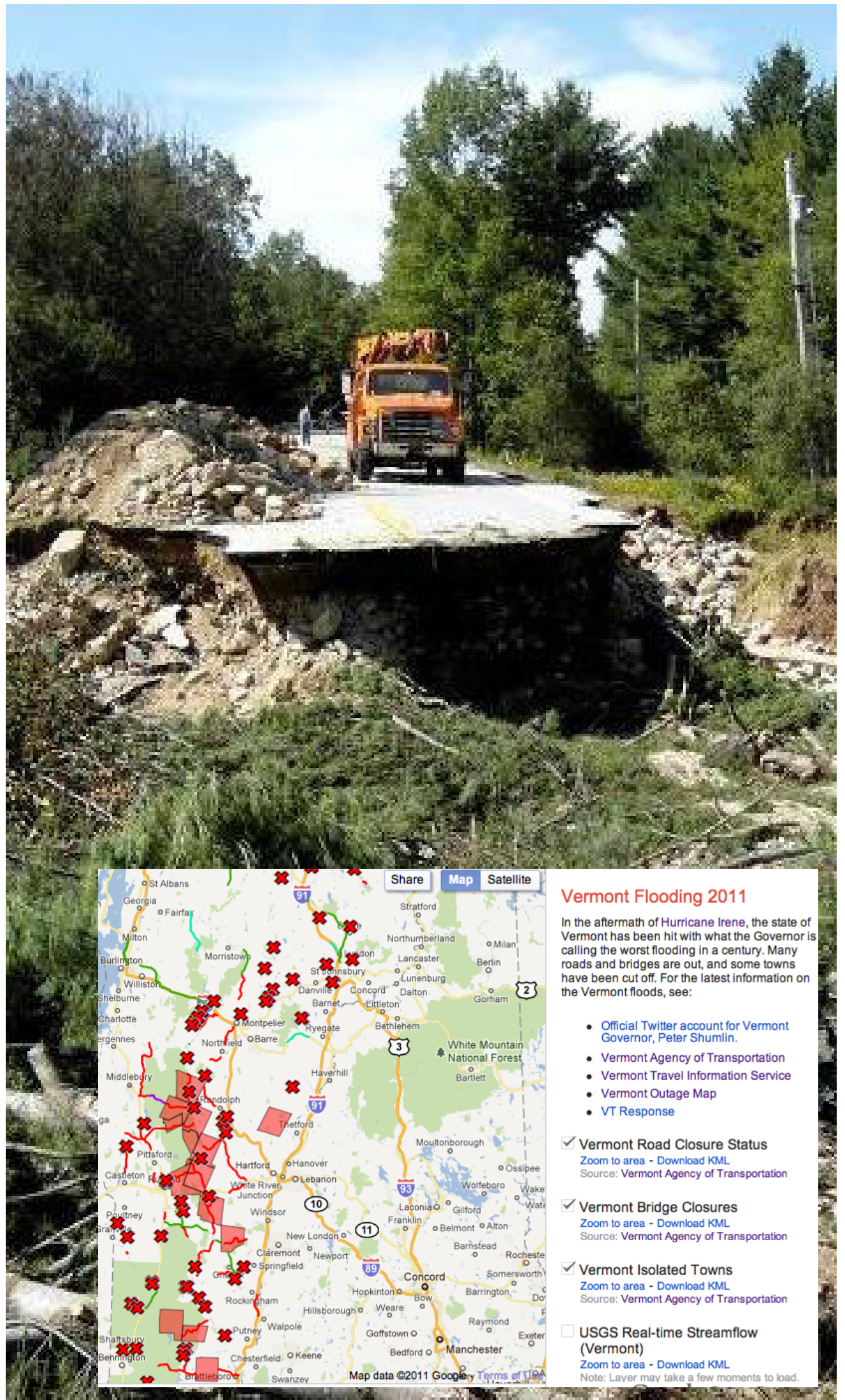
STATEWIDE

## Project Description

You really couldn't get here from there. But Google and VTrans moved fast to partner and map out the real-time road conditions.

The day after Hurricane Irene made landfall in Vermont, Matt Dunne, Head of Google Community Affairs and former Vermont State Senator from Windsor County reached out to VTrans to offer assistance identifying and assessing infrastructure damaged due to the impacts of the storm and flooding. Google's Crisis Response Team worked with the VTrans IT staff to develop a realtime road closure map for Vermont.

The dynamic map, a web-based platform, went live on the VTrans website a day later sourcing the latest information from statewide agencies. It was updated daily through November 17th, 2011. The new map not only identified which roads were impacted — such as Route 9 or Route 100 — but was even able to identify the specific locations along each road that were damaged. Each location was then color coded to help the travelers understand whether that location was closed, or just limited in some capacity.



## Lead Organization

VTrans

## Partner Organization(s)

Google Crisis Response Team

## What's Next

VTrans is now managing the system.

## Get in Touch

Matt Henderson  
Local Partnerships Manager  
Google

P: (802) 448-2970  
E: mahenderson@google.com